

VT Delfin *submarine system* brochure



VT Delfin system

Extremely compact, watertight and maneuverable submarine with integrated PTZ camera and gripper for visual inspection and FOSAR in nuclear power plants

Applications

- ▶ RPV and RPV internals
- ▶ Reactor coolant line and pump
- ▶ Pressurizer
- ▶ Steam generator primary side system
- ▶ All kind of FOSAR applications
- ▶ All kind of tank inspections

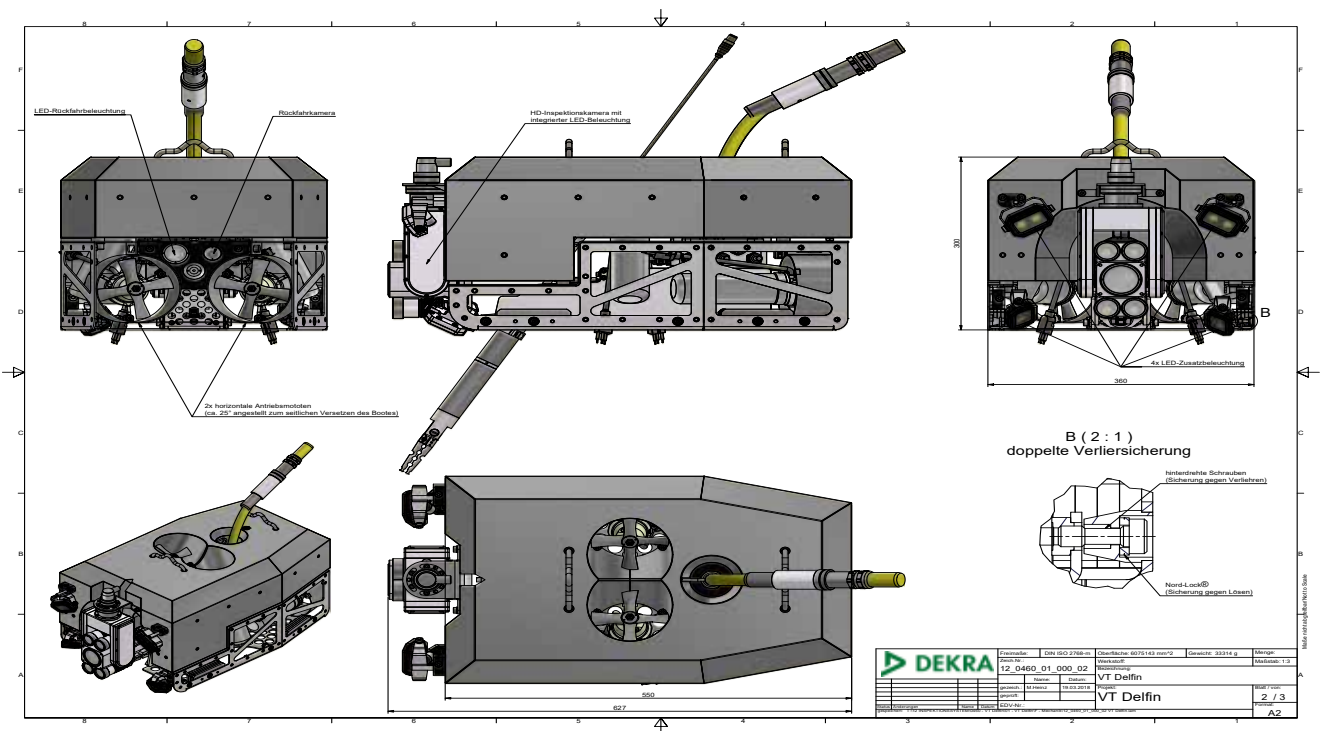
Features

- ▶ High maneuverability with movements in 3 dimensions
- ▶ Integrated FullHD PTZ inspection camera or high-rad tube camera
- ▶ Integrated extendable and tiltable gripper with 360° rotation head
- ▶ Integrated line laser for measurements of cracks etc.
- ▶ Rear view camera with lighting

Technical specifications - VT Delfin system

This document is for general information only, please consult the system manual for detailed specifications

Housing	stainless steel
Dimension	627x360x300 mm
Weight	27 kg
Speed	---
Operating temperature	---
Watertight	5 bar / 50 m
Lighting	4x LED spots
Luminous flux	~ 14,640 lm
Optionals	---
Features	<p>FullHD or high-rad inspection camera in the front</p> <p>additional lights for better visibility</p> <p>rear camera</p> <p>rear view light</p> <p>integrated gripper on the bottom</p>



Setup



1 Delfin



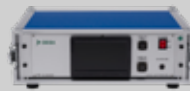
Submarine
VT Delfin

2 Cabling



Cable drum
VT 420-3 SKT

3 Control unit



Control unit
VT 270-3 CU

4 Add-ons



Monitor



Remote control
VT 270-3 XFB

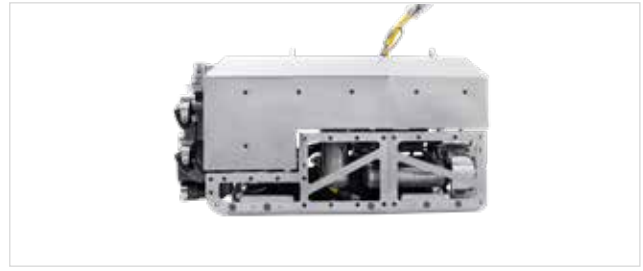


Remote control
VT 270-3 FB

Overview



VT Delfin ISO view



VT Delfin side view



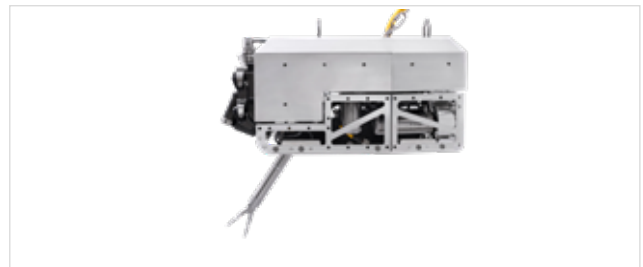
VT Delfin front view



VT Delfin rear view



VT Delfin ISO view with gripper



VT Delfin side view with gripper

DEKRA Visatec GmbH
Gewerbepark 7, 87477 Sulzberg/See
Germany
Tel. + 49.8376.9215 0
info.dvg@dekra.com

www.dekra-visatec.com

